

## **TRAUMATIC OCCLUSION: DEFINITION, CAUSES, DIAGNOSIS AND TREATMENT**

Yarmuhamedov Nabijon Navro'zovich

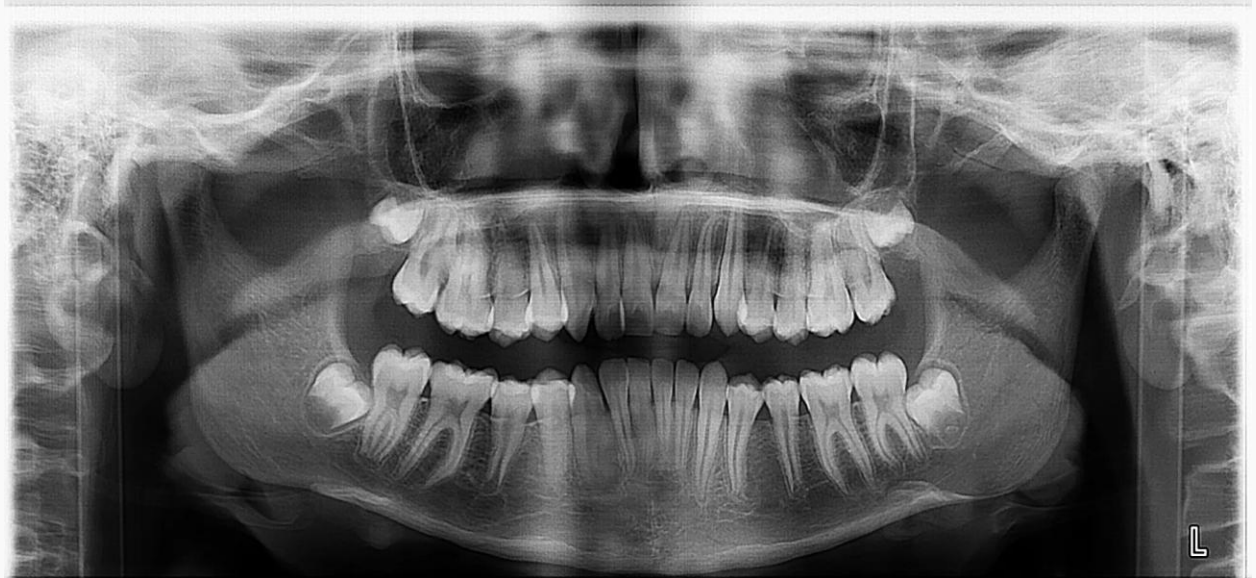
Axmedov Alisher Astanovich

Department of Orthopedic Dentistry

Samarkand State Medical University

### **Introduction:**

Traumatic occlusion is a condition in which the normal ratio of dentition is disrupted, which can lead to damage to teeth, gums and jaw joints. This phenomenon is of significant importance in dentistry, as it can cause a number of complications, including jaw pain, headaches, and chewing problems. In this article, we will consider the definition of traumatic occlusion, its causes, diagnostic methods and treatment approaches.

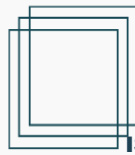


### **1. Definition of traumatic occlusion**

Traumatic occlusion is defined as a condition in which an incorrect ratio of teeth occurs when the jaws are closed. This can be caused by various factors, including:

- Incorrect position of the teeth.
- Loss of one or more teeth.
- Incorrect prosthetics.
- Changes in bite due to orthodontic treatment.

Traumatic occlusion can cause excessive pressure on certain teeth and structures, which leads to their damage and other clinical manifestations.



## **2. Causes of traumatic occlusion**

### **2.1. Anatomical factors**

Anatomical features of the jaws and teeth can contribute to the development of traumatic occlusion. For example:

- Asymmetry of the jaws.
- Incorrect tooth growth.
- Curvature of the dentition.

### **2.2. Functional factors**

Functional disorders such as bruxism (gnashing of teeth) or the habit of biting the lips can lead to traumatic occlusion. These actions create abnormal pressure on the teeth and joints.

### **2.3. Pathological factors**

Pathological conditions such as periodontitis or caries can change the position of teeth and contribute to the development of traumatic occlusion. Tooth loss due to diseases can also cause displacement of adjacent teeth.

### **2.4. Orthodontic changes**

Incorrectly performed orthodontic treatment can lead to a violation of occlusion. For example, insufficient bite correction or incorrect position of braces can contribute to the occurrence of traumatic occlusion.

## **3. Diagnosis of traumatic occlusion**

The diagnosis of traumatic occlusion includes several stages:

### **3.1. Clinical examination**

The dentist performs a thorough examination of the patient's oral cavity, paying attention to:

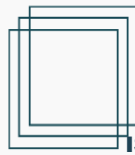
- The position of the teeth.
- Signs of enamel wear.
- The condition of the gums and joints.

### **3.2. Evaluation of functionality**

Functional tests help to identify problems with chewing and jaw movement. The dentist may ask the patient to perform certain movements to evaluate the work of the joints.

### **3.3. X-ray examination**

Radiographs help to assess the condition of teeth and surrounding tissues, as well as identify possible pathologies such as caries or periodontitis.



### **3.4. Assessment of occlusion**

The use of wax casts or special diagnostic tools allows you to assess the ratio of dentition and identify possible violations.

## **4. Treatment of traumatic occlusion**

The treatment of traumatic occlusion depends on its causes and severity. The main approaches include:

### **4.1. Conservative treatment**

Conservative methods include:

- Orthodontic treatment to correct the incorrect position of the teeth.
- The use of mouthguards to eliminate bruxism.
- Physiotherapy procedures to relieve tension in the jaw muscles.

### **4.2. Surgical intervention**

In some cases, surgical intervention may be required to correct anatomical abnormalities or restore lost teeth.

### **4.3. Prosthetics**

If the patient is missing teeth, prosthetics can help restore normal occlusion and improve the functionality of the oral cavity.

### **4.4. Patient education**

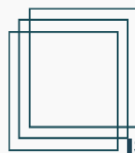
It is important to teach the patient proper oral care habits and techniques to prevent further occlusion problems.

## **5. Prevention of traumatic occlusion**

The prevention of traumatic occlusion includes regular dental examinations, proper oral care and timely treatment of dental and gum diseases. In addition, it is important to monitor your lifestyle: avoid stressful situations and habits that contribute to bruxism.

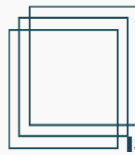
### **Conclusion:**

Traumatic occlusion is a serious condition that requires a careful approach to diagnosis and treatment. Understanding the causes and mechanisms of this condition allows dentists to develop effective strategies for its correction and prevention. Regular visits to the dentist and compliance with the recommendations for oral care will help to avoid the occurrence of traumatic occlusion and maintain dental health for many years.



**Reference:**

1. Marjona T. OPTIMIZATION AND IMPROVEMENT OF CARIES TREATMENT IN THE FIELD OF PERMANENT TEETH FISSURES IN CHILDREN //European International Journal of Multidisciplinary Research and Management Studies. – 2024. – T. 4. – №. 10. – C. 78-84.
2. Ruziyeva K. A., Burhonova Z. K. K. Complex Application Of Magnetic Laser Therapy And Propolis Tincture For The Prevention And Treatment Of Chronic Recurrent Aphthous Stomatitis //The American Journal of Medical Sciences and Pharmaceutical Research. – 2021. – T. 3. – №. 06. – C. 127-130.
3. Sevinch E., Zarafuz B. ETIOLOGICAL TREATMENT FEATURES INFLAMMATORY PERIODONTAL DISEASE //European International Journal of Multidisciplinary Research and Management Studies. – 2024. – T. 4. – №. 03. – C. 241-246.
4. Zarafuz K. S. B. THE ROLE OF ORAL CAVITY MICROORGANISMS IN THE DEVELOPMENT OF INFLAMMATION AND SOMATIC PATHOLOGY //International journal of advanced research in education, technology and management. – 2024. – T. 3. – №. 8. – C. 192-202.
5. Yusufboy S., Qobilovna B. Z. STUDY THE EFFECT OF HYGIENIC CARE ON THE MICROBIAL LANDSCAPE OF THE ORAL CAVITY IN PATIENTS USING COMBINED SPLINTING STRUCTURES WITH MODERATE PERIODONTITIS //European International Journal of Multidisciplinary Research and Management Studies. – 2024. – T. 4. – №. 02. – C. 50-55.
6. Yusufboy S., Qobilovna B. Z. FEATURES OF THE STRUCTURE OF COPD IN ELDERLY PATIENTS //European International Journal of Multidisciplinary Research and Management Studies. – 2024. – T. 4. – №. 05. – C. 363-368.
7. Sevinch E., Qobilovna B. Z. A STUDY ON THE MORPHOFUNCTIONAL STATE OF ORAL ORGAN TISSUES DURING THE USE OF NON-REMOVABLE ORTHODONTIC STRUCTURES //European International Journal of Multidisciplinary Research and Management Studies. – 2024. – T. 4. – №. 03. – C. 247-253.
8. Shaximardonova E. S., Kobilovna B. Z. RED LICHEN PLANUS OF THE ORAL MUCOSA AND ITS CLINICAL ANALYSIS OF A PATIENT WITH, ASSOCIATED WITH THE EPSTEIN–BARR VIRUS //European International Journal of Multidisciplinary Research and Management Studies. – 2024. – T. 4. – №. 01. – C. 272-279.
9. Yusufboy S., Qobilovna B. Z. STUDY OF CHANGES IN THE ORAL CAVITY IN ENDOCRINE DISEASES //European International Journal of Multidisciplinary Research and Management Studies. – 2024. – T. 4. – №. 05. – C. 357-362.



10. Yusufboy S., Qobilovna B. Z. STUDY OF CHANGES IN THE ORAL CAVITY IN ENDOCRINE DISEASES //European International Journal of Multidisciplinary Research and Management Studies. – 2024. – T. 4. – №. 05. – C. 357-362.
11. Yusufboy S., Qobilovna B. Z. SMARTBURS II–A REVIEW OF THE ADVANTAGES OF SMART BOR //European International Journal of Multidisciplinary Research and Management Studies. – 2024. – T. 4. – №. 02. – C. 56-60.
12. Makhmudovna T. M. et al. THE COURSE OF MALFORMATION AND CORNEAL EROSION IN TUBERCULOSIS PATIENTS //Open Access Repository. – 2023. – T. 4. – №. 03. – C. 60-66.
13. Dilafruz K. ROOT CANAL PREPARATION AS A STAGE OF TOOTH RESTORATION //International journal of advanced research in education, technology and management. – 2024. – T. 3. – №. 9. – C. 100-107.
14. Dilafruz K. COMPREHENSIVE TREATMENT GENERALIZED PERIODONTITIS AND CLINICAL AND RADIOLOGICAL EVALUATION OF EFFECTIVENESS //International journal of advanced research in education, technology and management. – 2024. – T. 3. – №. 9. – C. 108-116.